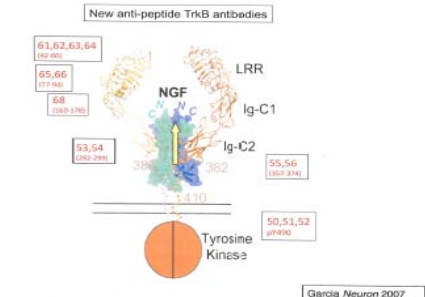
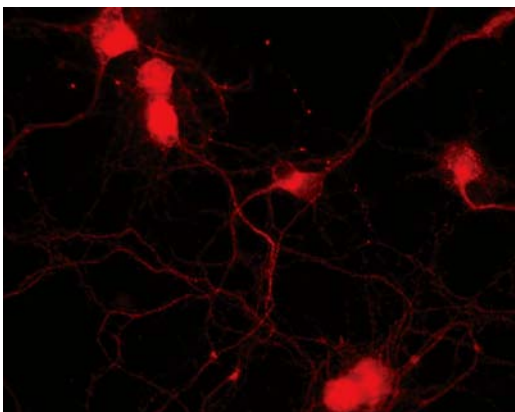
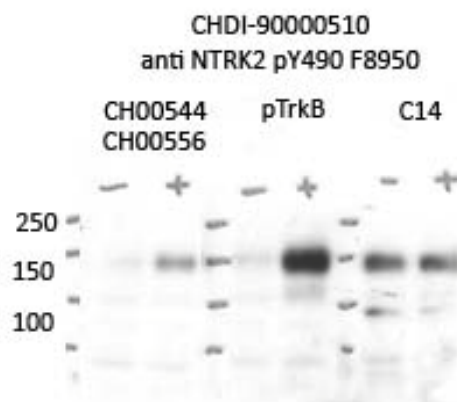


HD COMMUNITY BIOREPOSITORY – ANTIBODY DATASHEET

Antibody Information	
CHDI#	CHDI-90000510
CCR# (Coriell ID)	CH00544 CH00556
Antibody Name	anti NTRK2 pY490, F8950
Description	Rabbit polyclonal antibody specific to phosphotyrosine 490 of Trk B
Target Protein Name	
Volume/Concentration per vial	CH00544 0.335 mg/mL 250 μL CH00556 0.310 mg/mL 250 μL
Host Species	Rabbit
Isotype	Polyclonal
Immunogen/Epitope Sequence	ENPQ (pY) FGITNSQLKC, ENPQYFGITNSQLKC
Format	Affinity purified
Preparation	Borate-Buffered Saline + 1% BSA (w/v)
Source	Open Biosystems, Inc.
Species Reactivity	Mouse; Rat (as predicted by 100% homology of immunogen); Human=2 amino acid difference
Date Made	12/17/2009 and 3/25/10
Date Aliquotes Frozen	June 2010
Storage Conditions	-80°C
Application Notes	
Specificity Notes	strong immuno-reactivity to pTrkB, but not TrkB, TracA or TrkC
Validated Applications and Dilution*	WB: 1μg/mL (blocked by peptide); ICC-FL: 1μg/mL (very bright and punctuate similar to positive control); IHC: no data available IP/ELISA: no data available
Supporting Data	<p>Courtesy of M. Chao (NYU):</p> <p>Rat E18 primary cortical neurons were fixed in 4% PFA, 20% sucrose in PBS for 10 min at RT. The fixative was quenched and cells were permeabilized with 0.1% TX-100 in PBS for 3 min, blocked and incubated with TrkB antibodies @1 μg/mL and 2° antibodies @ 1:1000 in blocking solution. Cells were washed and mounted in Mowiol488. Images were taken on an EclipseE800 microscope equipped with a 20X objective (Nikon), FITC and TRITC filters (HQ96170M and HQ96171M, Chroma Technology Corp) and an Axiocam HR camera. using Axiovision software (Zeiss Vision GmbH).</p> 

Supporting Data continued	<p>Rat E18 primary cortical neurons DIV6 on glass coverslips coated with poly-d-lysine, maintained in Neurobasal media containing B27 supplement, 0.5 mM l-glutamine, 5-fluorouridine, and uridine. Neurons were lysed and cleared lysates (14,000 rpm 10 min) were analysed by WB. Lysates were treated with protease and phosphatase inhibitors before harvesting with 0.5% NP40. \pm 25 ng/mL BDNF for 10 min; 7.5 μg/mL lysate/lane; all antibodies used at 1 μg/mL; band @ 100kDa reflects the truncated TrkB species.</p> <p>C14 = Santa Cruz antibody; pTrkB =Rithwick's antibody</p>
---------------------------	---



* Where this antibody has not been tested for use in a particular technique this does not necessarily exclude its use in such procedures.

During shipment, small volumes of product will occasionally become entrapped in the seal of the product vial. For products with volumes of 200 μ L or less, we recommend gently tapping the vial on a hard surface or briefly centrifuging the vial in a tabletop centrifuge to dislodge any liquid in the container's cap.

Our antibodies have not been fully characterized and we cannot guarantee that the antibodies will work in any application other than ELISA against the immunizing peptide. Whenever possible, we will make data including suggested working dilutions available and the information provided should be used as a guideline only. It is recommended that the user titrates the antibody for use in their own system using appropriate negative/positive controls. Species reactivity information on the datasheets is provided for reference only.

We would greatly appreciate your feedback on the antibody, whether positive or negative.

For research use only; not for use as a diagnostic.